



HOLY EUCHARIST CATHOLIC PRIMARY



SCHOOL

1a Oleander Drive, St Albans South VIC 3021

www.hestalbanssth.catholic.edu.au

Mandarin Term 2

Grade 1

Feel free to ask me any question relating to your Mandarin lessons!

Please stay safe!

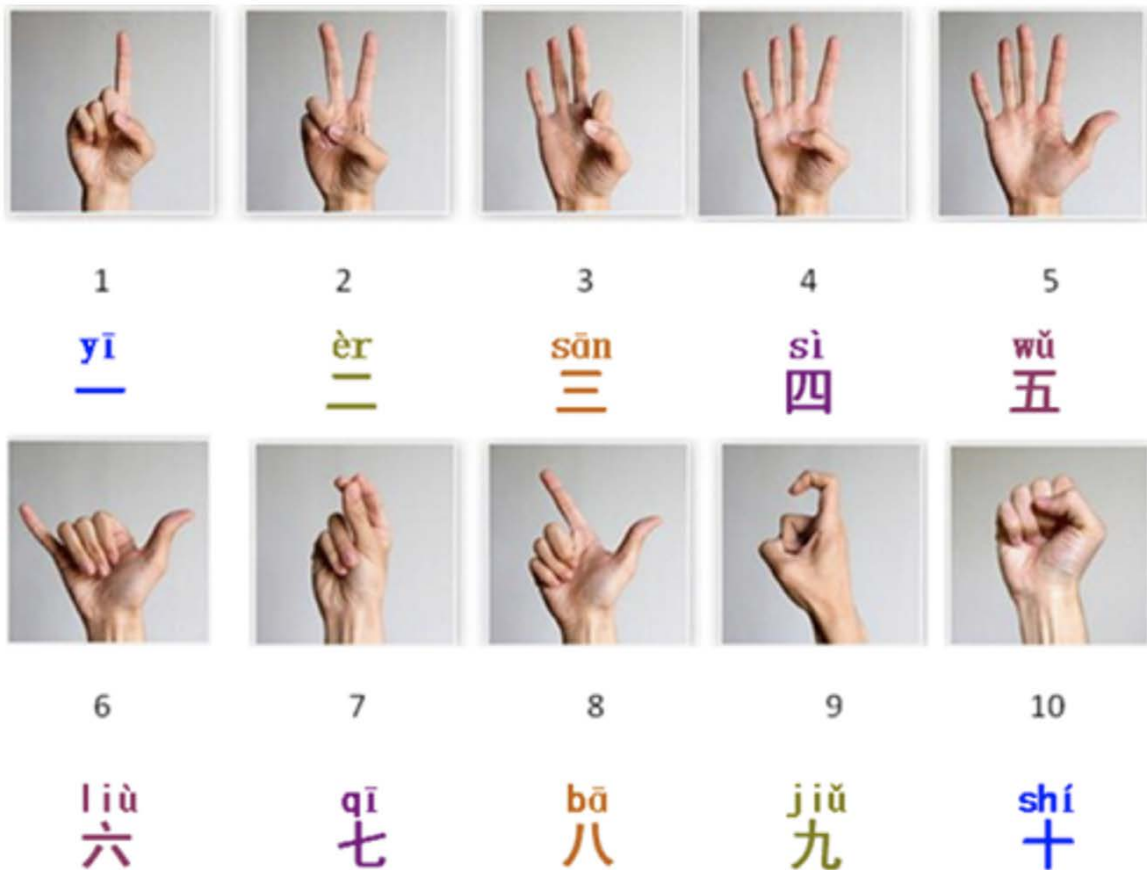
Mrs. Huynh

Mrs. Huynh's email is:

linda.huynh@hestalbanssth.catholic.edu.au

Week 3

Activity 1 – Revision -- Use one hand to count the Chinese numbers 1—10.



Activity 2 – Revision --Counting from 1-20 in Chinese

1	2	3	4	5	6	7	8	9	10
一	二	三	四	五	六	七	八	九	十
yi	èr	san	sì	wǔ	liu	qi	ba	jǐu	shí
11	12	13	14	15	16	17	18	19	20
十一	十二	十三	十四	十五	十六	十七	十八	十九	二十
shí	shí	shí	shí	shí	shí	shí	shí	shí	èr
yi	èr	san	sì	wǔ	liu	qi	ba	jǐu	shí

Activity 3: Play matching games

Click on the links below.

Learn Chinese in 3 easy steps : Numbers 1-10 English-Pinyin-Chinese characters

<https://www.youtube.com/watch?v=z7ME6tPhRG4>

- Game 1: Can you match the picture with the number Pinyin?
- Game 2: Can you match the Pinyin and Chinese number?

Write down how many pairs you got correct?

Try again next time.

Activity 4—Continue to finish the Numbers worksheet from Week 2.

Write the Chinese numbers 11—20.

Then use Pinyin to write next to the English number.

Example: one yi ; five wǔ ; nine jiǔ

Write / trace Chinese numbers 11—20

十一	十一	十一				
Shí yī	Shí yī	Shí yī	Shí yī	Shí yī	Shí yī	Shí yī
十二	十二	十二				
Shí èr	Shí èr	Shí èr	Shí èr	Shí èr	Shí èr	Shí èr
十三	十三	十三				
Shí sān	Shí sān	Shí sān	Shí sān	Shí sān	Shí sān	Shí sān
十四	十四	十四				
Shí sì	Shí sì	Shí sì	Shí sì	Shí sì	Shí sì	Shí sì
十五	十五	十五				
Shí wǔ	Shí wǔ	Shí wǔ	Shí wǔ	Shí wǔ	Shí wǔ	Shí wǔ
十六	十六	十六				
Shí liù	Shí liù	Shí liù	Shí liù	Shí liù	Shí liù	Shí liù
十七	十七	十七				
Shí qī	Shí qī	Shí qī	Shí qī	Shí qī	Shí qī	Shí qī
十八	十八	十八				
Shí bā	Shí bā	Shí bā	Shí bā	Shí bā	Shí bā	Shí bā
十九	十九	十九				
Shí jiǔ	Shí jiǔ	Shí jiǔ	Shí jiǔ	Shí jiǔ	Shí jiǔ	Shí jiǔ
二十	二十	二十				
èr shí	èr shí	èr shí	èr shí	èr shí	èr shí	èr shí

Write Chinese numbers 1-10

One _____ two _____ three _____ four _____ five _____

Six _____ seven _____ eight _____ nine _____ ten _____

* Use Pinyin to write next to the English number.

Example: 15 shí wǔ ; 12 shí èr ; 20 èr shí

11 _____ ; 14 _____ ; 17 _____ ; 13 _____ ; 19 _____

SEE YOU NEXT WEEK!